

# The Nizamabad District Cooperative Central Bank Ltd.

## Head Office, Nizamabad

Ref No.: NDCCB/Premises/Furniture/2025-26

Date: 19.11.2025

### **NOTICE INVITING SEALED QUOTATIONS**

**Subject:** Sealed quotations are invited from experienced bidders for **Providing Interior Furniture Works at Pedda Mallareddy Branch in Kamareddy District, Telangana.**

#### **Key Details:**

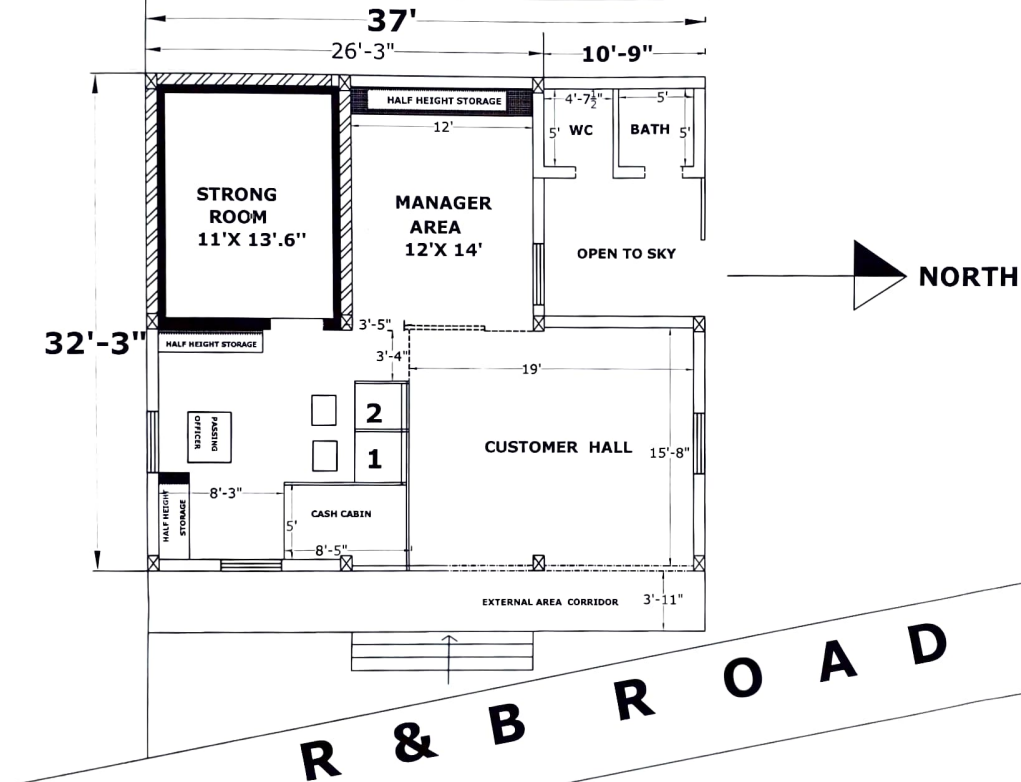
- **Name of Work:** Providing Interior Furniture Works at Pedda Mallareddy Branch in Kamareddy District.
- The furniture work is to be carried out on a turnkey basis, including supply of materials, fabrication, installation, finishing, and handover of the site in ready-to-use condition.
- **Location:** Pedda Mallareddy, Kamareddy District. (**Plan** and Detailed Abstract **Estimation** is attached.)
- **Eligibility:** Bidders must have prior experience in furniture works. Relevant proof should be submitted along with the quotation. And Participating contractors/firms must possess a **valid GST** registration number.
- **EMD (Earnest Money Deposit):** – 5000/- DD in favour of Chief Executive Officer, NDCC Bank Ltd.,
- **Processing Fee (Non Refundable):** 3000/- + GST (18%) = 3540/- DD in favour of Chief Executive Officer, NDCC Bank Ltd.,
- **Submission of Quotation:** From 20.11.2025 Sealed quotations along with the detailed project report must be submitted at the Head Office on your firm's letterhead within the prescribed time limit.
- **Last Date & Time for Submission:** 28.11.2025
- **Opening of Quotations:** 29.11.2025
- **Contact for Clarifications:** Contact Person Name: A.Bheem Rao (Assistant General Manager) Phone no: 7730059111 Email id : [ceo\\_nzb@nzbdccb.org](mailto:ceo_nzb@nzbdccb.org) (Alternate contact no. 9848420043 – A.Narsaiah – Asst Engineer)

Detailed terms and conditions, technical specifications, and submission requirements can be obtained from the premises section, Head Office during working hours.

The Bank reserves the right to accept or reject any or all quotations without assigning any reason thereof.

Sd/-  
General Manager  
NDCC Bank Ltd.,

**FURNITURE PLAN SHOWING THE PROPOSED NDCCBANK  
PEDDAMALLAREDDY BANK BUILDING BRANCH  
AT PEDDAMALLAREDDY VILLAGE**



**BUILTUP AREA :  
1091 SFT**

**DETAILED AND ABSTRACT ESTIMATION FOR PROVIDING OF INTERIOR FURNITURE  
WORKS TO NDCCBANK LTD PEDDAMALLAREDDY BRANCH IN KAMAREDDY DISTRICT,  
TELANGANA.**


Sl. No	Name of Component	NOS			LENGTH	HEIGHT	AREA	RATE	AMOUNT IN RS.
1	2	3	4	5	6	7	8	9	10
1	Providing and fixing in position partly glazed Full Height Partition with 30 mm thick flush door shutter work as shown in the drawings Frame work with provide 19mm plywood on both sides finished with 1mm thick colour laminates as directed engineer in charge colours as shown in drawings .Provide 5mm thick clear float glass with etching fixed in flush door shutter and fixed partion frosting as per drawing shown fixed with wooden beeding . All exposed partion surfaces to be finished in melamine polish of matching laminate colour as directed engineer in charge including all necessary Stainless Steel finish fittings / hardware, door closers, Godrej locks and wood preservative paint etc. including cost and conveyance of all materials and labour charges ,machinery etc completed for finished item of work (i.e: In case of false ceiling, the vertical members to be fixed with pucca ceiling but the area of partition payable will be below the false ceiling only). <b>MANAGER AREA PARTION</b>								
A	<b>MANAGER AREA PARTION</b>								
	AS PER DATA	1	X	1	2.2	1	1.50	10484.86	15727.00
							SQM	SQM	
2	Providing and fixing in position partly glazed Full Height Partition with 30 mm thick flush door shutter work as shown in the drawings Frame work with provide 19mm plywood on both sides finished with 1mm thick colour laminates as directed engineer in charge colours as shown in drawings .Provide 5mm thick clear float glass with etching fixed in flush door shutter and fixed partion frosting as per drawing shown fixed with wooden beeding . All exposed partion surfaces to be finished in melamine polish of matching laminate colour as directed engineer in charge including all necessary Stainless Steel finish fittings / hardware, door closers, Godrej locks and wood preservative paint etc. including cost and conveyance of all materials and labour charges ,machinery etc completed for finished item of work (i.e: In case of false ceiling, the vertical members to be fixed with pucca ceiling but the area of partition payable will be below the false ceiling only). <b>CASH CABIN PARTION</b>								
	<b>CASH CABIN PARTION</b>								
	WALL 1	I	1.5	X	2.75	4.13			
	WALL 1	I	1.5	X	2.40	3.60			
	WALL 2	I	2.4	X	2.40	5.76			
							13.49	3231.32	43574.00
							SQM	SQM	

3	Providing and fixing in position Plywood to WORK STATION CUBICAL PARTION HALF HIEGHT PARTITION : shown in the drawings provide 19mm plywood ONE sides finished with 1mm thick colour laminates as directed engineer in charge colours as shown in drawings ,to the fixed matching laminate colour as directed engineer in charge including all necessary stainless Steel finish fittings / hardware, and wood preservative paint etc. including cost and conveyance of all materials and labour charges ,machinery etc completed for finished item of work <b>WORK STATION CUBICAL PARTION HALF HIEGHT PARTITION :</b>							
A	<b>WORK STATION CUBICAL PARTION HALF HIEGHT PARTITION :</b>							
	LONG	1	3.35	x	0.75	1.35		
	CW	2	0.90	x	0.75	1.35		
						2.70	2.70	5596.86
							SQM	SQM
4	Providing and fixing in position HALF HIEGHT STORAGE RACK work as shown in the drawings WITH 19 mm thick plywood on both sides finished with 1mm thick colour laminates as directed engineer in charge including all necessary Stainless Steel finish fittings / hardware, Godrej locks and wood preservative paint etc. including cost and conveyance of all materials and labour charges ,machinery etc completed for finished item of work . PROVINDING OF SIDE STORAGE (HALF HEIGHT STORAGES) SIZE: : 1.20 X 0.51 X 0.90							
	<b>HALF HEIGHT STORAGE (1.20 X 0.51 X 0.90 )</b>							
	SIZE OF STORAGES	1	X	3			3.00	
							3.00	28893.57
							NOS	EACH
5	Providing and fixing in position STORAGE RACK work as shown in the drawings WITH 19 mm thick plywood on both sides finished with 1mm thick colour laminates as directed engineer in charge including all necessary Stainless Steel finish fittings / hardware, Godrej locks and wood preservative paint etc. including cost and conveyance of all materials and labour charges ,machinery etc completed for finished item of work .(HALF HEIGHT STORAGES) SIZE: 3.65 X 0.51 X 0.90							
	<b>MANAGER ROOM STORAGE (HALF HEIGHT STORAGES) SIZE:</b>							
	1	X	1	3.65 X 0.51 X 0.90			1.00	47983.70
							NOS	EACH
6	Providing and fixing in position Toughened Plain Glass 12 mm shown work as shown in the drawings fixed partion frosting as per drawing shown fixed with wooden beeding . All exposed partion surfaces to be finished in melamine polish of matching laminate colour as directed engineer in charge including all necessary Stainless Steel finish fittings / hardware, paint etc. including cost and conveyance of all materials and labour charges ,machinery etc completed for finished item of work. Plain Float Glass 12 mm thick GLASS PARTION							
	<b>PROVDING Plain Float Glass 12 mm thick GLASS PARTION WITH 9MM THICK PLY WOOD TOP</b>							
	ROLLING SHUTTER GLASS 1	1	2.75	x	2.75	7.56		



	ROLLING SHUTTER GLASS 2	1	2.55	x	2.75	7.01			
						14.58	1.00	3949.82	57569.00
7	Providing and fixing OFFICE TABLE WITH DRAWEE,KEY BOARD in position section frame and provide 12mm plywood on both sides finished with 1mm thick colour laminates as directed engineer in charge colours as shown in drawings . as per drawing shown fixed with wooden beeding . All exposed partion surfaces to be finished in melamine polish of matching laminate colour as directed engineer in charge including all necessary Stainless Steel finish fittings / hardware, door closers, Godrej locks and wood preservative paint etc. including cost and conveyance of all materials and labour charges ,machinery etc completed for finished item of work MANAGER TABLE								
	MANAGER TABLE	1	X	1	1.5	1.05	1		
							1.00	39635.51	39636.00
							NOS	EACH	
8	Providing and fixing OFFICE TABLE WITH DRAWEE,KEY BOARD in position section frame and provide 12mm plywood on both sides finished with 1mm thick colour laminates as directed engineer in charge colours as shown in drawings . as per drawing shown fixed with wooden beeding . All exposed partion surfaces to be finished in melamine polish of matching laminate colour as directed engineer in charge including all necessary Stainless Steel finish fittings / hardware, door closers, Godrej locks and wood preservative paint etc. including cost and conveyance of all materials and labour charges ,machinery etc completed for finished item of work WORKSTATION TABLE								
	WORKSTATION TABLE	3	X	1	1.200	0.93	3		
							3.00	31619.43	94858.00
							NOS	EACH	
9	Providing and fixing in position WICKETGATE as shown in the drawings provide 19mm & 9mm plywood on both sides finished with 1mm thick colour laminates as directed engineer in charge colours as shown in drawings .to the fixed partion with wooden beeding . All exposed partion surfaces to be finished in melamine polish of matching laminate colour as directed engineer in charge including all necessary Stainless Steel finish fittings / hardware, and wood preservative paint etc. including cost and conveyance of all materials and labour charges ,machinery etc completed for finished item of work WICKET GATE								
	WICKET GATE	1	X	1	0.9	0.9	1		
							1.00	5694.51	5695.00

10	Providing and fixing in position WRITING BOX as shown in the drawings provide 19mm & 9mm plywood on both sides finished with 1mm thick colour laminates as directed engineer in charge colours as shown in drawings .to the fixed partion with wooden beeding . All exposed partion surfaces to be finished in melamine polish of matching laminate colour as directed engineer in charge including all necessary Stainless Steel finish fittings / hardware, and wood preservative paint etc. including cost and conveyance of all materials and labour charges ,machinery etc completed for finished item of work WRITING BOX								
	WRITING BOX	1	X	1	0.9	0.9	1		
							1.00	6725.04	6725.00
							NOS	EACH	
	SUB TOTAL RS.							413561.00	
11	Add GST @ 18%								74440.98
							TOTAL RS:		488001.98

  
**Asst. Engineer**  
**N.B.C.C. Bank Ltd, Nizamabad.**