

The Nizamabad District Cooperative Central Bank Ltd. Head Office, Nizamabad

Ref No.: NDCCB/Premises/CW/2026-27

Date: 13.05.2026

Subject: Quotation Notice for Construction of Toilet Block Unit (Male & Female) at Head Office Premises.

Quotation Notice

Sealed quotations are invited from eligible and experienced contractors/agencies/skilled masons (Mestri/Masthry) having experience in building construction works for the "Construction of Toilet Block Unit (Male & Female)" at the Head Office premises of THE NIZAMABAD DISTRICT CO-OPERATIVE CENTRAL BANK LIMITED.

Scope of Work: The work includes construction of separate toilet blocks for male and female users along with civil, sanitary, water supply, and electrical works as per the specifications and estimate approved by the Bank Engineer.

The detailed plan, Abstract Estimate, and Detailed Estimate are enclosed along with this quotation notice for reference and submission of quotations accordingly.

Estimated Cost of Work: Rs.2,80,000/- (Rupees Two Lakhs Eighty Thousand Only)

Terms & Conditions:

The contractor/agency/skilled mason should have experience in similar building construction works. The work shall be completed within the stipulated time prescribed by the Bank. Materials used for the work should be of standard quality and strictly as per the enclosed specifications. The Bank reserves the right to accept or reject any quotation without assigning any reason thereof. Interested contractors/agencies/skilled masons may visit the site during office hours for inspection before submission of quotations.

Sealed quotations may be submitted at the Head Office from 13.05.2026 to 20.05.2026 up to 05:00 PM on all working days. The quotations received will be finalized on 21.05.2026.

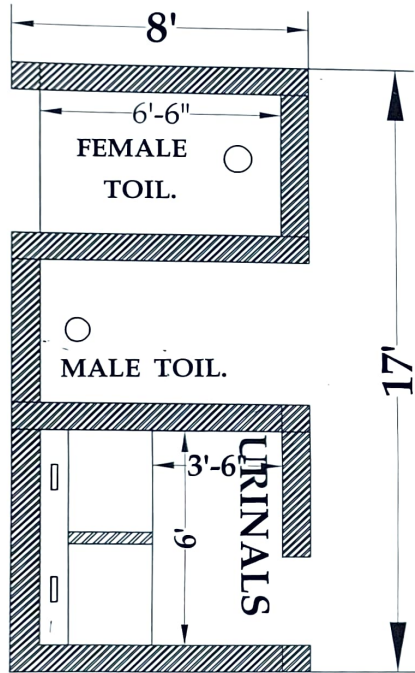
For any further details regarding the work, interested contractors/agencies/skilled masons may contact our Bank Assistant Engineer Sri A. Narsaiah, Mobile No: 9848420043.

Note: The Chief Executive Officer of the Bank has the right to Modify or Cancel the Quotation Notice any time. And the Chief Executive Officers decision will be final.

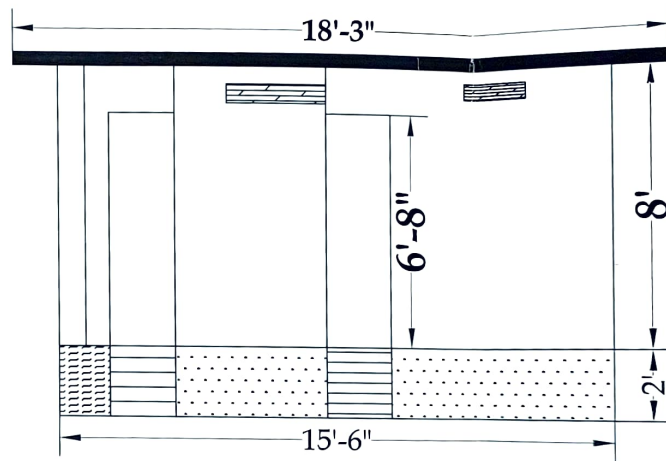
Sd/-

General Manager

**PLAN SHOWING THE PROPOSED CONSTRUCTION OF
TOILET BLOCK IN THE PREMISES OF HEAD OFFICE
NDCCBANLTD NIZAMABAD.**



TOILET PLAN




FRONT VIEW

GENERAL ABSTRACT 2026-27

**Name of work: - Construction of TOILET BLOCK UNIT (MALE & FEMALE) IN
THE HEAD OFFICE NDCCBANK LTD NIZAMABAD , Nizamabad District.**

S. No.	Name of Component	Amount in Rs.
1	TOILET BLOCK CIVIL WORK	243417.00
2	Water supply and Sanitary	25000.00
3	Electrical	5000.00
		273417.00
4	LS for U/s items and rounding off	6583.00
	TOTAL :	280000.00


Asst. Engineer
N.D.C.C. Bank Ltd, Nizamabad

Detailed and Abstract Estimate -

**Name of work: - Construction of TOILET BLOCK UNIT (MALE & FEMALE) IN THE HEAD OFFICE
NDCCBANK LTD NIZAMABAD , Nizamabad District.**

S. No	Description of work	Nos			L	B	D	Qty	Rate	Per	Amount
1	Earth work for structures as per drawing and technical specifications Clause 305.1 including setting out, construction of shoring and bracing, removal of stumps and other deleterious material and disposal upto a lead of 50 m, dressing of sides and bottom and backfilling in trenches with excavated suitable material as per technical Specification 305 MORD / 304 MORTH										
	FOUNDATION										
	LW	1	x	2	5.18	0.38	0.60	2.36			
	CW	1	x	2	1.95	0.38	0.60	0.89			
								Cum	3.25	385.39	1 Cum 1253.00
2	Supply and filling of Gravel in trenches, sides of foundations and basement with initial lead in layers not exceeding 15 cm thick, consolidating each deposited layer by watering and ramming including cost and conveyance of water to work site and all operational, incidental, labour charges, hire charges of T & P etc., complete for finished item of work. (APSS NO. 309 & 310) including cost and conveyance of all material and labour charges, and contractors profit & over heads but excluding seignorage charges and GST etc., complete.										
	In TOILET BLOCK	1	x	1	5.64	1.95	0.60	6.60			
	In Front of Building	1	x	1	4.00	3.00	0.60	7.20			
								Cum	13.80	215.82	1 Cum 2978.00
3	Plain Cement Concrete of (1:5:10) proportion nominal mix (cement: fine aggregate: Coarse aggregate) using 40mm size HG M/c (SS5) metal with concrete mixture including cost and conveyance of all materials like cement, sand, coarse aggregate, water etc. to site, all operational, incidental, and labour charges such as mixing, laying and ramming concrete in layers in position not exceeding 15cm, finishing top surface, curing concrete, overhead charges & Contractors profit etc., complete but excluding GST & seignorage charges, sales & other taxes on all materials, for finished item of work for Foundations (APSS No. 402).										
	LW	1	x	2	5.18	0.38	0.10	0.39			
	CW	1	x	2	1.95	0.38	0.10	0.15			
								Cum	0.54	3981.38	1 Cum 2150.00

S. No	Description of work	Nos	L	B	D	Qty	Rate	Per	Amount	
4	Plain Cement Concrete of (1:5:10) proportion nominal mix (cement: fine aggregate: Coarse aggregate) using 40mm size HG M/c (SS5) metal with concrete mixture including cost and conveyance of all materials like cement, sand, coarse aggregate, water etc. to site, all operational, incidental, and labour charges such as mixing, laying and ramming concrete in layers in position not exceeding 15cm, finishing top surface, curing concrete, overhead charges & Contractors profit etc., complete but excluding GST & seigniorage charges, sales & other taxes on all materials, for finished item of work for Foundations (APSS No. 402).									
IN TOILET BLOCK										
	MALE TOIL	1 x 1	1.95	1.20	0.10	0.23				
	FEMALE TOIL	1 x 1	1.95	1.20	0.10	0.23				
	URINALS	1 x 1	1.80	1.95	0.15	0.53				
	ENTRY STEPS	1 x 3	1.50	1.00	0.10	0.45				
					Cum	1.44	3981.38	1	Cum	5733.00
5	Supply and placing of the VRCC M20 Design mix Concrete corresponding to Table 9 of IS 456 using Concrete Mixer with 20mm size graded machine crushed HG metal (coarse aggregate) from approved quarry including cost and conveyance of all materials like cement, fine aggregate (sand) coarse aggregate, water etc., to site including cost and conveyance of all materials, including all operational, incidental and labour charges such as , machine mixing, laying concrete, curing, including contractor profit and over head charges etc., complete but excluding cost of steel and its fabrication charges for finished item of work with minimum cement content as per IS code from standard suppliers approved by the department including pumping, centering, shuttering, laying concrete, vibrating, curing etc. complete but excluding GST and seigniorage charges for finished item of work. For Plinth Beams									
	Plinth beams									
	External Walls									
	For L/walls	1 x 2	5.18	0.23	0.30	0.71				
	For C/walls	1 x 4	1.95	0.23	0.30	0.54				
					Cum	1.25	11584.46	1	Cum	14481.00

S. No	Description of work	Nos	L	B	D	Qty	Rate	Per	Amount	
7	Supply and placing of the VRCC M20 Design mix Concrete corresponding to Table 9 of IS 456 using Concrete Mixer with 20mm size graded machine crushed HG metal (coarse aggregate) from approved quarry including cost and conveyance of all materials like cement, fine aggregate (sand) coarse aggregate, water etc., to site including cost and conveyance of all materials, including all operational, incidental and labour charges such as , machine mixing, laying concrete, curing, including contractor profit and over head charges etc.,complete but excluding cost of steel and its fabrication charges for finished item of work with minimum cement content as per IS code from standard suppliers approved by the department including pumping, centering, shuttering, laying concrete, vibrating, curing etc. complete but excluding GST and seignorage charges for finished item of work. For Roof Slab 150mm thick									
	Roof Slab 100 MM THICK	1	x	1	5.80	3.00	17.40			
						Sqm	17.40	1202.86	1 Sqm	20930.00
8	Supply and placing of the VRCC M20 Design mix Concrete corresponding to Table 9 of IS 456 using Concrete Mixer with 20mm size graded machine crushed HG metal (coarse aggregate) from approved quarry including cost and conveyance of all materials like cement, fine aggregate (sand) coarse aggregate, water etc., to site including cost and conveyance of all materials, including all operational, incidental and labour charges such as , machine mixing, laying concrete, curing, including contractor profit and over head charges etc.,complete but excluding cost of steel and its fabrication charges for finished item of work with minimum cement content as per IS code from standard suppliers approved by the department including pumping, centering, shuttering, laying concrete, vibrating, curing etc. complete but excluding GST and seignorage charges for finished item of work. For Lintels									
	Over Door	1	x	3	1.00	0.23	0.15	0.10		
						Cum	0.10	12024.58	1 Cum	1202.00
9	Brick masonry for panel walls in superstructure with CM (1:8) prop: (Cement : Screened sand) using common burnt clay bricks of class as per Table- I of IS:1077-1992, Non- Modular or traditional size 23 x 11 x 7 cms from approved source having minimum crushing strength of 40 Kg/Sqcm. including cost and conveyance of all materials like cement, screened sand, bricks, water etc., to site, including sales & other taxes except GST on all materials and such as labour charges, like mixing cement mortar, scaffolding charges, constructing masonry, lift charges, curing, etc.,and overheads & contractors profit complete for finished item of work. (APSS No. 501 & 504).									
	For Basement Upto GL									
	L/walls	1	x	2	5.18	0.23	0.10	0.24		
	C/walls	1	x	4	1.95	0.23	0.10	0.18		
	For Basement Above GL									
	L/walls	1	x	2	5.18	0.23	0.30	0.71		

S. No	Description of work	Nos			L	B	D	Qty	Rate	Per	Amount	
	C/walls	1	x	4	1.95	0.23	0.30	0.54				
	Above Basement to Roof Level											
	L/walls	1	x	2	5.18	0.23	2.10	5.00				
	C/walls	1	x	4	1.95	0.23	2.10	3.77				
	Steps at Entrance											
		1	x	3	1.20	0.90	0.15	0.49				
		1	x	3	1.20	0.60	0.15	0.32				
		1	x	3	1.20	0.30	0.15	0.16				
	URINALS	1	x	1	0.60	0.11	0.90	0.06				
	Deductions											
	D1	1	x	3	0.75	0.23	2.00	-1.04				
	Ventilators V1	1	x	2	0.90	0.23	0.38	-0.16				
	MS IRON GRILLS	1	x	2	0.90	0.23	0.60	-0.25				
							Cum	10.02	7559.77	1	Cum	75749.00
10	Supply and fixing of WPC FRAME size 100X65 MM (0.75X2.00) with shutter with Flush door shutters, solid bond wood block board type with commercial ply on both faces.: 30 mm thick conforming to IS:2202 to existing frame including MS powder coated fixtures such as Butt hinges 150mm long 6 Nos, 200mm long Aldrop 1 No, Tower bolt 200mm long 1 no, Handle 150mm long 2 no including cost and conveyance of all materials and labour charges etc., complete											
	D1	1	x	3	0.75		2.00	3.00				
							No	3.00	4850.00	1	No	14550.00
11	Ornamental Plastering 12mm thick in two coats with base coat of 8mm thick in CM (1:5) and top coat of 4mm thick in CM (1:3) dubara sponge finish including cost and conveyance of all materials like cement, sand, water etc., to site, seigniorage charges, sales & other taxes on all materials, all operational, incidental and labour charges such as mixing mortar, scaffolding charges, lift charges, including cutting of Grooves wherever necessary as directed by Engineer - in - charge, finishing, curing, etc., complete for Even Surfaces of Wall for finished item of work. (APSS 901,903 & 904)											
	Ceiling Plastering											
	FEMALE TOILET	1	x	1	1.95	1.20		2.34				
	L/walls	1	x	2	1.95		2.40	9.36				
	C/walls	2	x	2	1.20		2.40	11.52				
	MALE TOILET	1	x	1	1.95	1.20		2.34				
	L/walls	1	x	2	1.95		2.45	9.56				
	C/walls	2	x	2	1.20		2.45	11.76				
	URINALS CEILING	1	x	1	1.95		2.45	4.78				
	LW	1	x	2	1.95		2.45	9.56				
	CW	1	x	2	1.80	2.45		8.82				
	URINALS	1	x	2	0.90		0.90	1.62				
	EXTERNAL WALLS LW	1	x	2	5.18	3.00		31.08				
	CW	1	x	2	2.40	3.00		14.40				
	SLAB PROJECTIONS LW	2	x	2	5.90		0.45	10.62				
	CW	2	x	2	2.40	0.45		4.32				

S. No	Description of work	Nos			L	B	D	Qty	Rate	Per	Amount
	TOP AREA	1	x	1	5.90		3.16	18.64			
	ENTRYSSTEPS @ TREADS	3	x	3	1.20	0.30		3.24			
	TREADS	3	x	3	1.20		0.13	1.35			
	SIDES 1	3	x	3	0.60	0.13		0.68			
	SIDE 2	3	x	3	0.30		0.20	0.54			
	Deductions										
	Columns	1	x	6	0.23		3.00	-4.14			
	D1	2	x	3	0.75		2.00	-9.00			
	Ventilators V1	2	x	2	0.90		0.38	-1.37			
	MS IRON GRILLS	2	x	2	0.90		0.60	-2.16			
							Sqm	139.86	439.22	1 Sqm	61429.00
12	Painting to New walls with two coats of Acrylic Emulsion paint of superior quality of approved brand and shade over base coat of cement primer interior grade -I making three coats in all to give an even shade after thoroughly brushing the surface to remove all loose powdered materials, including cost and conveyance of all materials, including cost and conveyance of all materials, cost of brushes, water to site, etc., sales & other taxes, all operational, incidental and labour charges such as scaffolding charges, lift charges, curing etc., complete for finished item of work in all floors for internal Walls.(APSS No. 912) in All Floors										
							Sqm	139.86	160.96	1 Sqm	22512.00
13	Providing High Yield Strength Deformed (HYSD) steel bars (Fe 500 grade as per IS 1786-1979) Steel Fe 500 /500D / 550D from prime producers like TATA, SAIL, VSP, Jindal & shyam steel etc. of different diameters for RCC works , including labour charges for straightening, cutting, bending to required sizes and shapes, placing in position with cover blocks of approved materials and size and tying and lap-splicing with binding wire of 18 SWG, forming grills for reinforcement work as per approved designs and drawings, including cost and conveyance of steel bars, including all wastages such as overlaps, couplings, chairs, spacer bars including cost and conveyance of binding wire, cover blocks and all incidental, operational, labour charges such as cutting, bending, placing in position, tying including soverhead charges & Contractors profit but exlcuding GST and other taxes on all materials etc., complete for finished item of work in all floors.(APSS No.126)										
	Plinth beams				1.25	90.00		112.50			
	Roof Slab				17.40	10.00		174.00			
	Lintel				0.10	90.00		9.00			
								295.50			
							MT	0.30	68166.00	1 MT	20450.00
									TOTAL RS.		243417.00

A. Arjun
AE/INRCS/MSB